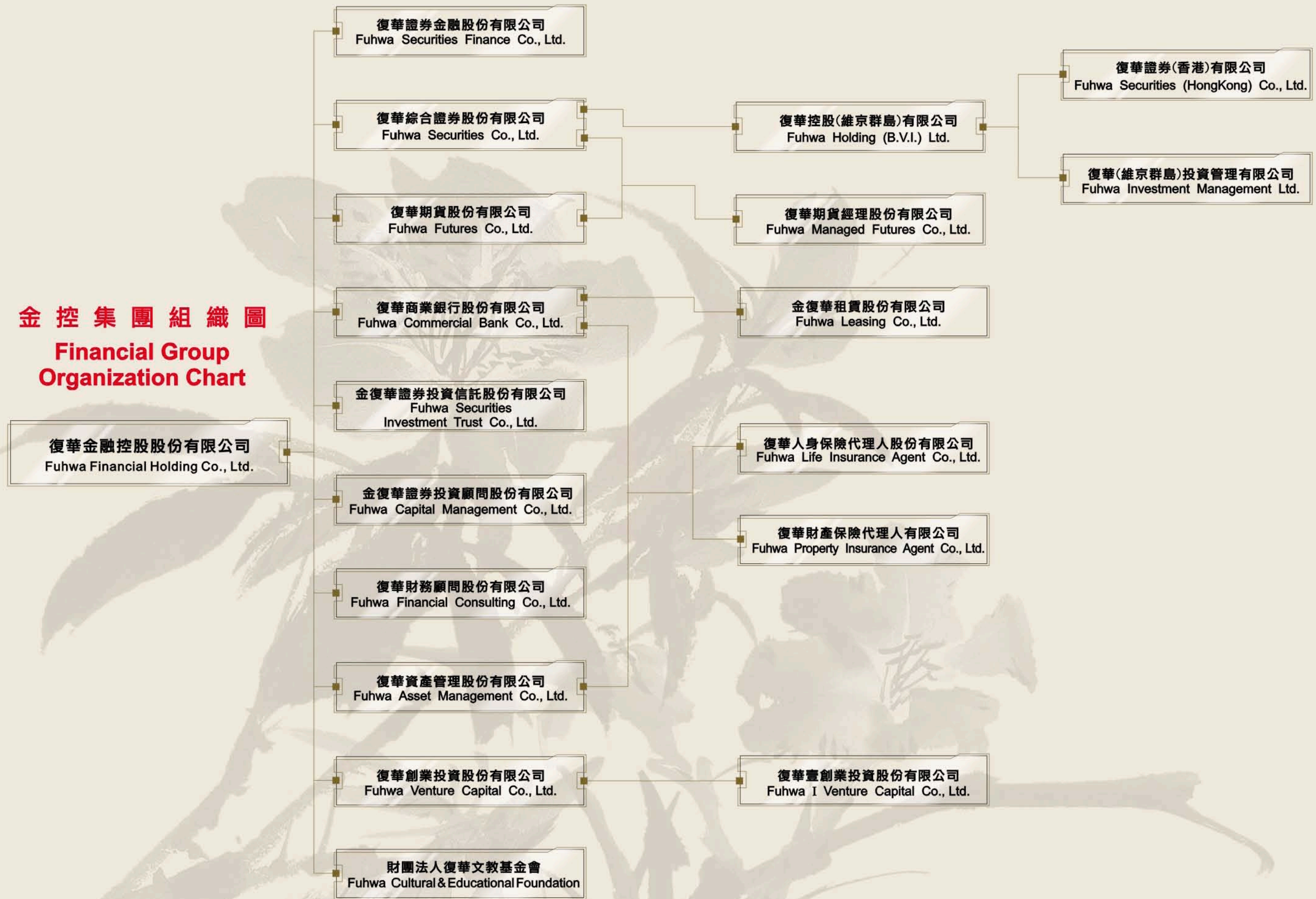


金控集團組織圖
Financial Group Organization Chart





復華金控暨子公司董事長及總經理

Chairman and President of Fuhwa Financial Holding Co., Ltd. and its Subsidiaries

由左至右 From left to Right

何國光	復華創投總經理	Milton Ho	President of Fuhwa Venture Capital
范玲玉	金復華投信總經理	Selma Fan	President of Fuhwa Securities Investment Trust
陳松興	復華銀行總經理	Chung-Hsing Chen	President of Fuhwa Bank & 復華資產管理董事長 Chairman of Fuhwa Asset Management
莊有德	復華證金總經理	Yu-De Chuang	President of Fuhwa Securities Finance & 金復華投顧董事長 Chairman of Fuhwa Capital Management
陳錦峰	復華證券總經理	Chin-Feng Chen	President of Fuhwa Securities
黃壽佐	復華金控總經理	Shou-Tzuou Huang	President of Fuhwa Financial Holdings, 復華證券董事長 Chairman of Fuhwa Securities, 復華創投董事長 Fuhwa Venture Capital & 復華財顧董事長 Fuhwa Financial Consulting
張昌邦	復華金控董事長	Chang-Pang Chang	Chairman of Fuhwa Financial Holdings & 復華證金董事長 Fuhwa Securities Finance
徐抗宗	復華期貨董事長	Kang-Tsung Hsu	Chairman of Fuhwa Futures
劉曾華	金復華投信董事長	Tseng-Hwa Liu	Chairman of Fuhwa Securities Investment Trust
高抗勝	復華銀行董事長	Kang-Sheng Kao	Chairman of Fuhwa Bank
袁麗霞	復華文教基金會執行長	Lee-Hsia Yuan	C.E.O of Fuhwa Cultural and Educational Foundation
王中愷	復華期貨總經理	Chung-Kai Wang	President of Fuhwa Futures
張紹澍	金復華投顧總經理	Sam Chang	President of Fuhwa Capital Management
劉潔芝	復華財顧代總經理	Jaycee Liu	Acting General Manager of Fuhwa Financial Consulting

集團獲利表現 Profit Performance of Group

單位：新台幣仟元
Unit: NT\$ Thousand

公司別 Company	年度 Year	資產總額 Total Assets	營業收入 Operating Revenues	稅後損益 Net Income	稅後每股盈餘(元) Earnings Per Share(NT\$)
復華證金 Fuhwa Securities Finance	2004	53,675,754	2,601,406	1,728,226	1.42
	2003	49,099,410	2,188,336	1,449,500	1.19
復華證券 Fuhwa Securities	2004	37,765,693	4,394,127	736,770	0.89
	2003	26,907,648	3,667,063	737,620	1.00
復華期貨 Fuhwa Futures	2004	4,350,381	499,284	79,323	0.84
	2003	3,296,509	374,763	39,078	0.33
復華銀行 Fuhwa Bank	2004	272,693,863	10,275,863	1,502,258	1.11
	2003	235,245,635	8,750,611	913,579	0.84
金復華投信 Fuhwa Securities Investment Trust	2004	575,398	401,816	149,681	4.99
	2003	425,225	248,203	64,807	2.16
金復華投顧 Fuhwa Capital Management	2004	59,761	23,769	2,706	0.54
	2003	57,491	20,640	1,521	0.11
復華創投 Fuhwa Venture Capital	2004	1,007,273	25,505	22,203	0.22
	2003	997,039	(330)	(753)	(0.008)
復華財顧 Fuhwa Financial Consulting	2004	59,494	10,593	4,212	0.84
	2003	54,604	5,882	3,340	0.94
復華資產管理 Fuhwa Asset Management	2004	1,481,994	154,564	12,619	0.13
	2003	1,686,059	2,230	8,692	0.09